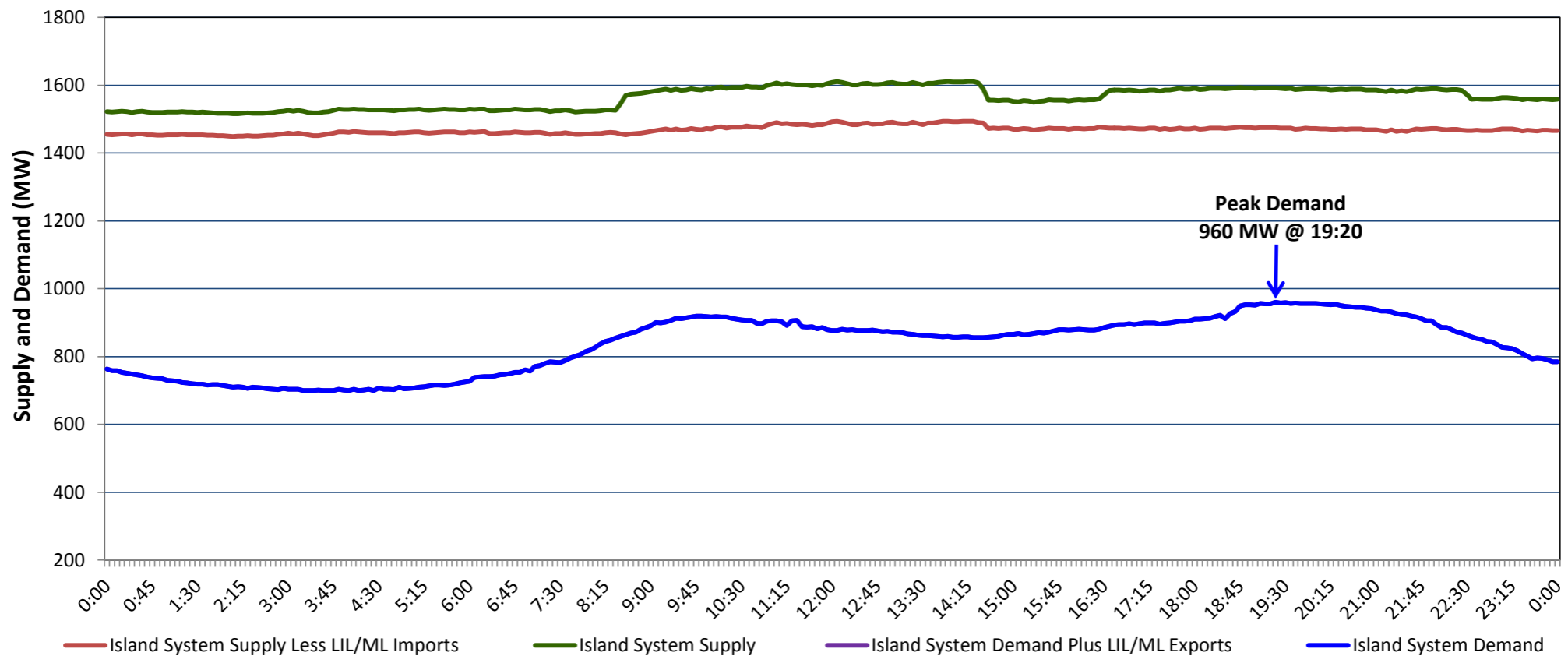


Newfoundland Labrador Hydro (NLH) Supply and Demand Status Report Filed Monday, October 15, 2018

Section 1 Island Interconnected System Supply, Demand & Exports Actual 24 Hour System Performance For Sunday, October 14, 2018



Supply Notes For October 14, 2018

1,2

- A As of 1000 hours, July 27, 2018, Holyrood Unit 1 unavailable due to planned outage 88 MW (170 MW).
- B As of 1623 hours, September 28, 2018, Holyrood Unit 3 unavailable due to planned outage 110 MW (150 MW).
- C As of 0757 hours, October 08, 2018, Bay d'Espoir Unit 7 unavailable due to planned outage (154.4 MW).
- D As of 1911 hours, October 11, 2018, Stephenville Gas Turbine available at 25 MW (50 MW).

Section 2 Island Interconnected Supply and Demand

Mon, Oct 15, 2018	Island System Outlook ³		Seven-Day Forecast	Temperature (°C)		Island System Daily Peak Demand (MW)	
				Morning	Evening	Forecast	Adjusted ⁷
Available Island System Supply: ⁵	1,536	MW	Monday, October 15, 2018	5	6	1,035	1,035
NLH Island Generation: ⁴	1,195	MW	Tuesday, October 16, 2018	9	9	1,025	1,025
NLH Island Power Purchases: ⁶	85	MW	Wednesday, October 17, 2018	7	6	1,020	1,020
Other Island Generation:	190	MW	Thursday, October 18, 2018	3	6	1,160	1,160
ML/LIL Imports:	66	MW	Friday, October 19, 2018	3	1	1,175	1,175
Current St. John's Temperature & Windchill:	5 °C	N/A °C	Saturday, October 20, 2018	3	7	1,105	1,105
7-Day Island Peak Demand Forecast:	1,175	MW	Sunday, October 21, 2018	11	14	970	970

Supply Notes For October 15, 2018

3

- Notes:
1. Generation outages for running and corrective maintenance are included. These are not unusual for power system operations. They generally do not impact customer supply. The power system operators schedule outages to system equipment whenever possible to coincide with periods when customer demands are low and sufficient supply reserves are available. However, from time to time equipment outages are necessary and reserves may be impacted.
 2. Due to the Island System having no synchronous connections to the larger North American grid, when there is a sudden loss of large generating units some customer's load must be interrupted for short periods to bring generation output equal to customer demand. This automatic action of power system protection, referred to as under frequency load shedding, is necessary to ensure the integrity and reliability of system equipment. Under frequency events typically occur 5 to 8 times per year on the Island Interconnected System and the resultant customer load interruptions are generally less than 30 minutes.
 3. As of 0800 Hours.
 4. Gross output including station service at Holyrood (24.5 MW) and improved NLH hydraulic output due to water levels (35 MW).
 5. Gross output from all Island sources (including Note 4).
 6. NLH Island Power Purchases include: CBPP Co-Gen, Nalcor Exploits, Rattle Brook, Star Lake, Wind Generation and capacity assistance (when applicable).
 7. Adjusted for curtailable load, market activities and the impact of voltage reduction when applicable.

Section 3 Island Peak Demand Information Previous Day Actual Peak and Current Day Forecast Peak

Sun, Oct 14, 2018	Actual Island Peak Demand ⁸	19:20	960 MW
Mon, Oct 15, 2018	Forecast Island Peak Demand		1,035 MW

Notes: 8. Island Demand / LIL / ML Exports (where applicable) is supplied by NLH generation and purchases, plus generation owned and operated by Newfoundland Power and Corner Brook Pulp & Paper (Deer Lake Power, DLP).